



# Monica's Apartment

## 90 Bedford St, Apartment #20

### DIY Cut and Fold Kit

#### WHAT YOU WILL NEED:

- 9 Sheets of Double Sided Matte Photo Paper, 61lb thickness or heavier. Don't use glossy photo paper, because it has a backing on it that makes it hard to fold and get a crisp clean edge.
- Printer with color ink.
- Craft knife (or scissors)
- Straight edge
- Double sided tape
- Glue stick
- Scoring tool

#### INSTRUCTIONS:

- 1) PRINT all project pages on your matte photo paper on the finest setting. Allow pages to dry before handling.
- 2) Using the SCORING tool and the straight edge, score all the black dotted lines so they are easier to fold later.
- 3) Using the craft KNIFE and straight edge, cut along all the green dotted lines carefully. (Adults only) If you mess up, don't sweat it, just reprint and try again!
- 4) FOLD along all the black dotted lines.
- 5) To make the furniture, you will be making boxes. Fold all sides of the box and tuck in the tabs. Apply glue stick to the tabs to secure.
- 6) Attach the wall sections to each other first, then line up the wall sections to the floor and use glue stick or double sided tape to attach them together.

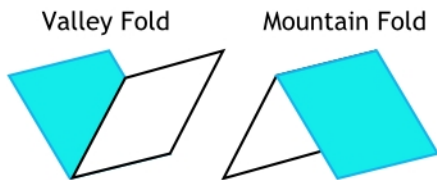
If you want to guest star on the show, take a full length picture of yourself in front of a white wall and print it so it is about 2¼ inches tall, then attach a base and you can join the cast in "The One with You." Make a Vine and share on Twitter! @alanronay

#### SCAVENGER HUNT:

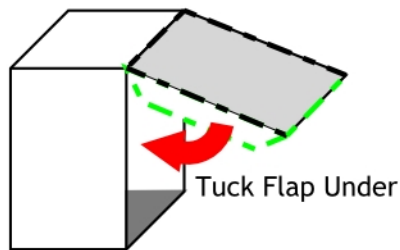
- ❑ Monica's yellow cleaning gloves (cuz she's a neat freak)
- ❑ Messy closet from "The One With The Secret Closet" Season 8, Ep 14
- ❑ Ross' dinosaur toys from "The One with the Cooking Class" Season 8, Ep 21
- ❑ Ross's red sweater from "The One With The Red Sweater" Season 8, Ep 2
- ❑ Phoebe's guitar
- ❑ Keep an eye out for Joey on the TV
- ❑ Ross and Rachel's "Frankie Say Relax" Shirt Season 3, Ep 19 "The One With The Tiny T-Shirt"
- ❑ Phoebe's Dollhouse from "The One with the Dollhouse" Season 3, Ep 20
- ❑ TV Guide addressed to Miss Chanandler Bong
- ❑ Rachel's favorite movie: Dangerous Liaisons and Weekend at Bernie's
- ❑ Sandwich for Joey, his favorite food
- ❑ Joey's imaginary friend Maurice, the Space cowboy. He's in there, I swear!

# Tips and Techniques

## Folding



## Making Boxes



## Cut vs Fold

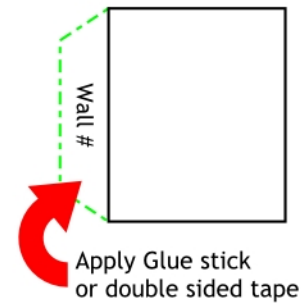
CUT - - - - -  
FOLD - - - - -

## Pro Tips

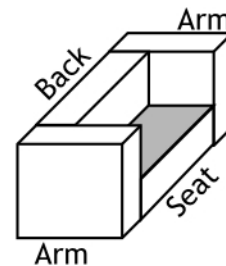
Resist the urge to use a glue gun or liquid glue. Liquid glue will dampen the paper and make it warp, and a glue gun is overkill.

For a sturdier model, mount the wall pages and floor pages onto 1/4 inch foam board or matte board using spray adhesive or glue stick.

## Glue



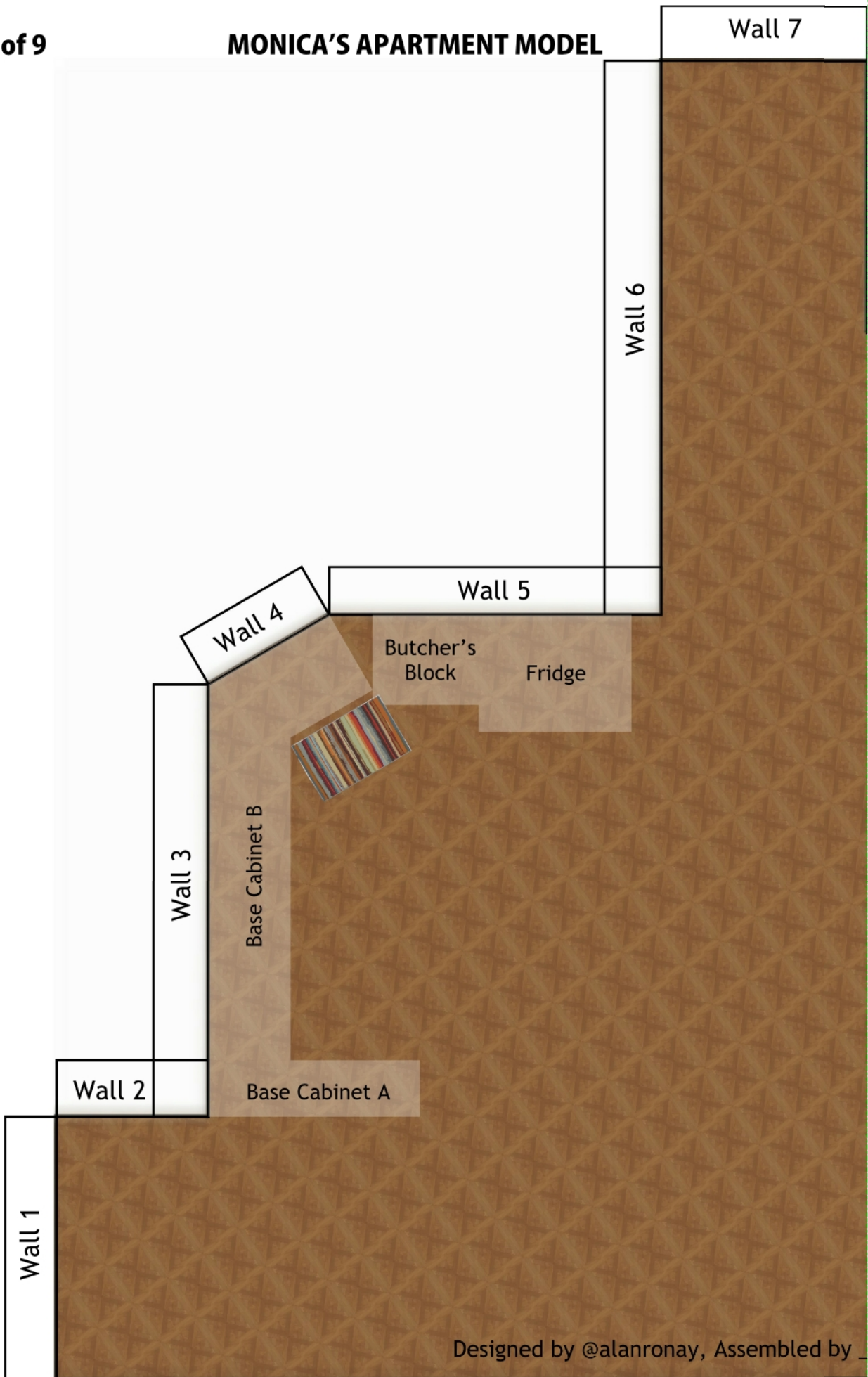
## Couch/Chair



## Assembly Guide

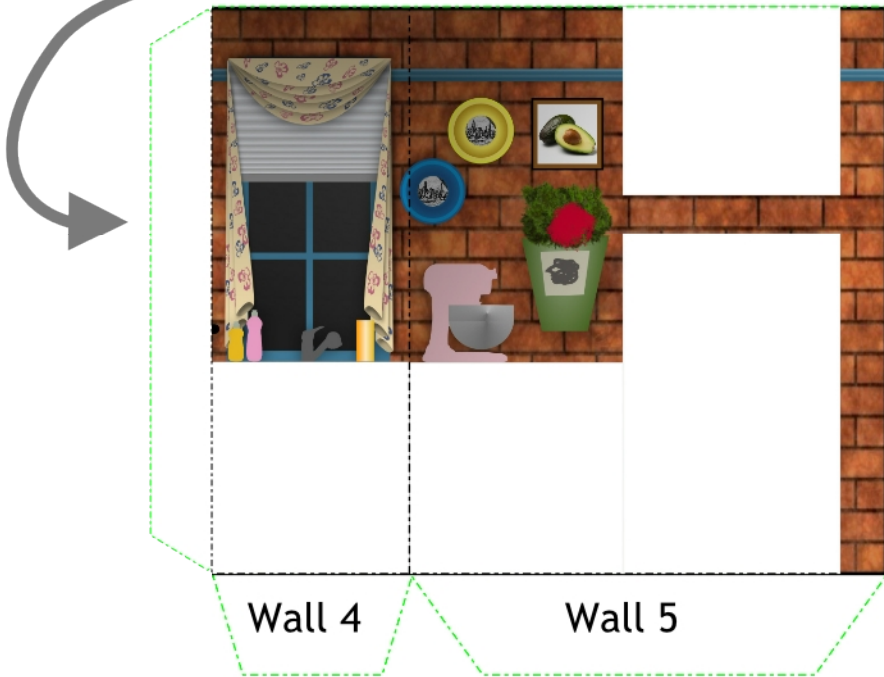
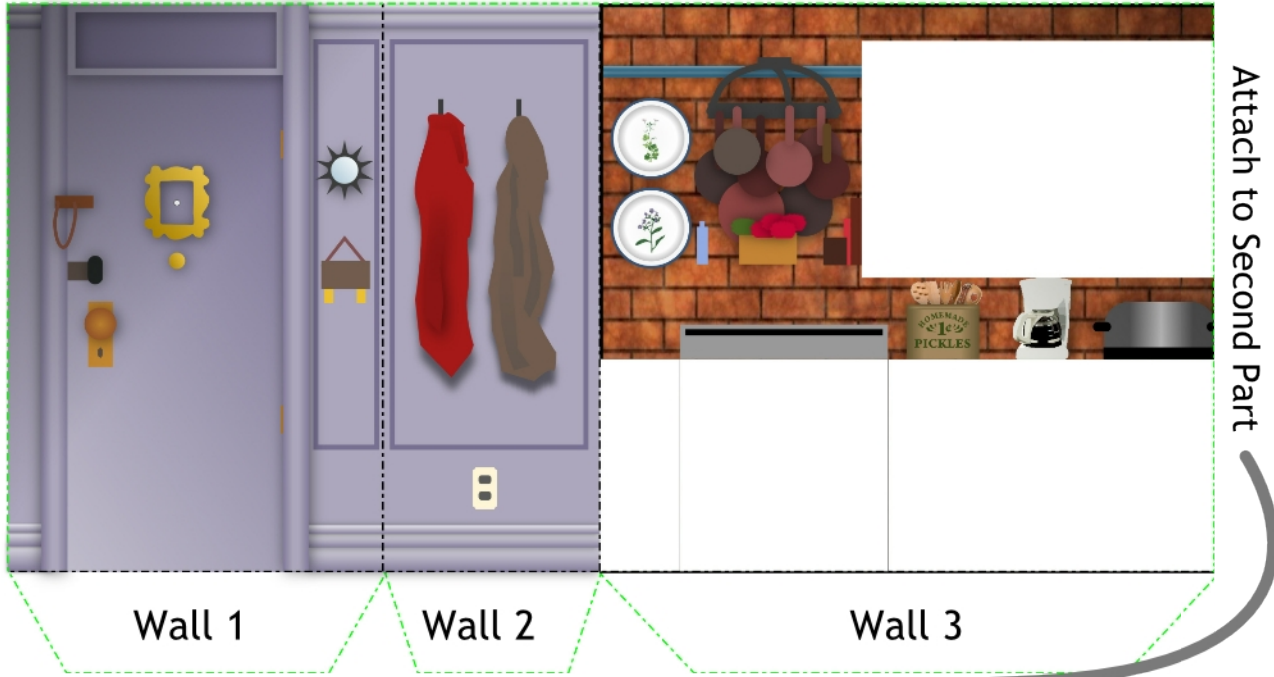


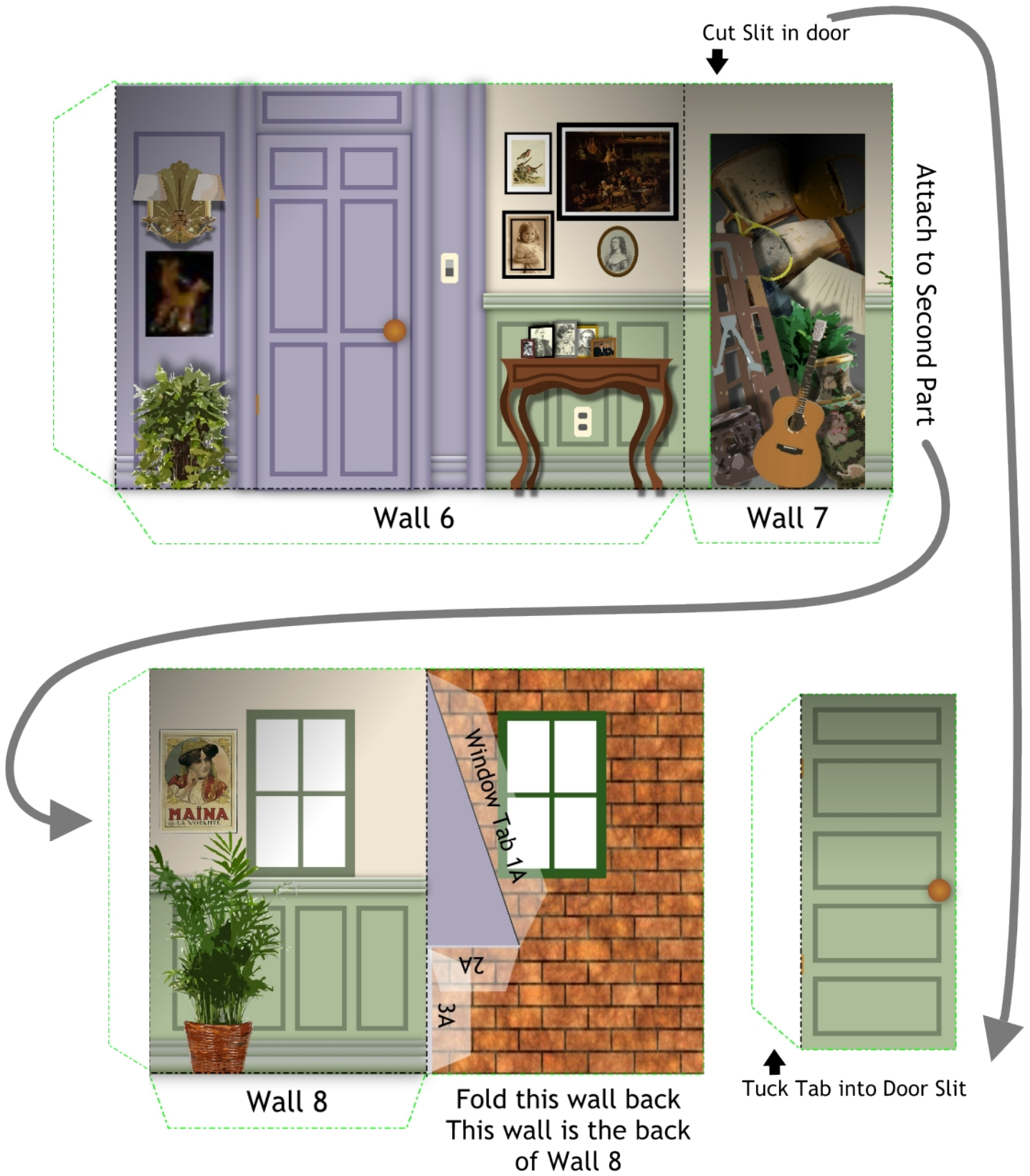
MONICA'S APARTMENT MODEL

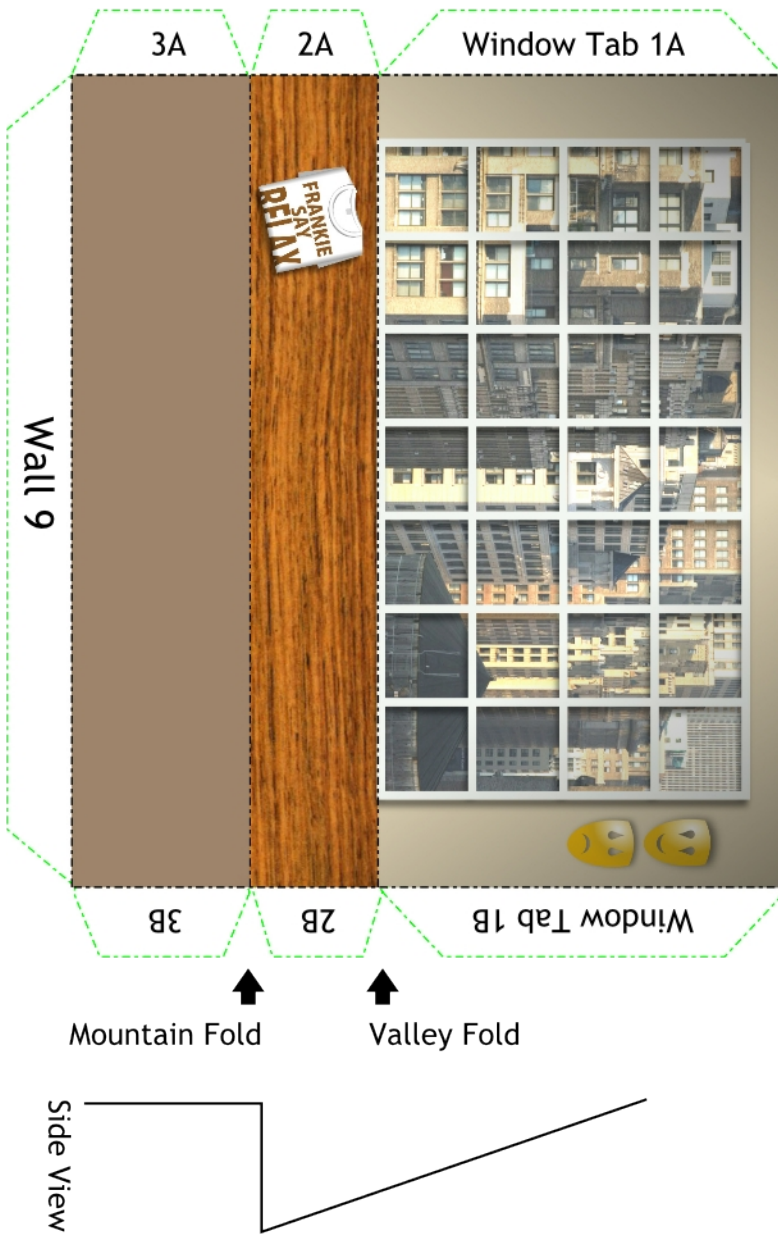


ATTACH TO SECTION 2

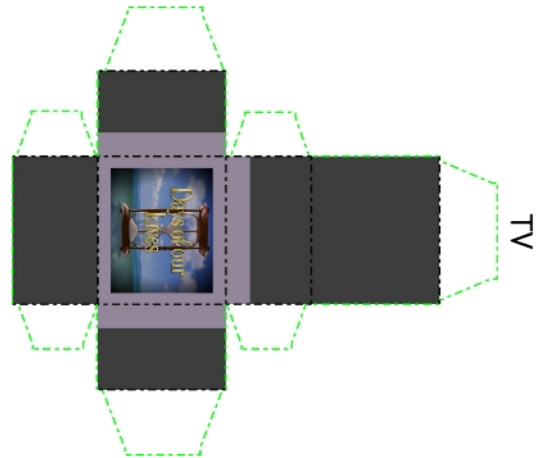
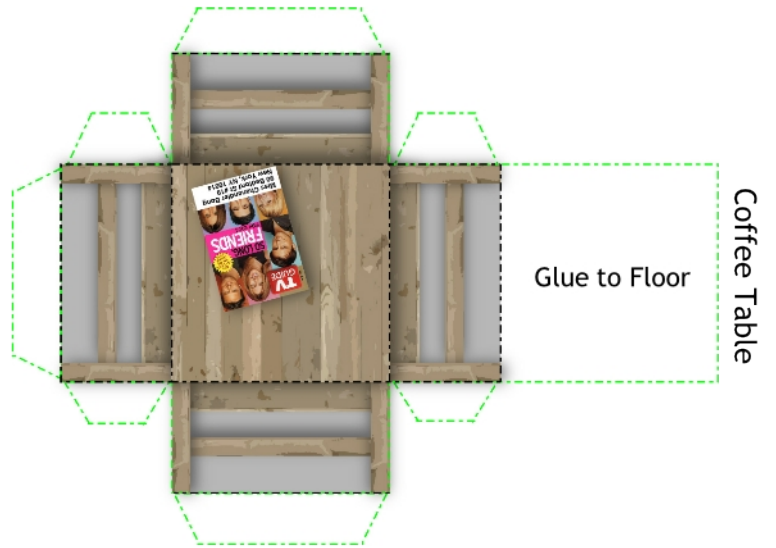
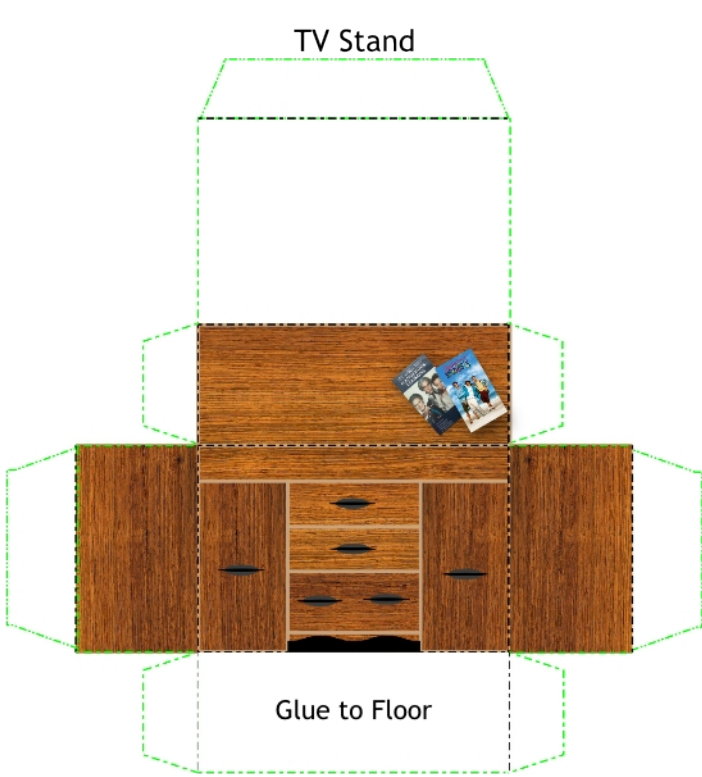




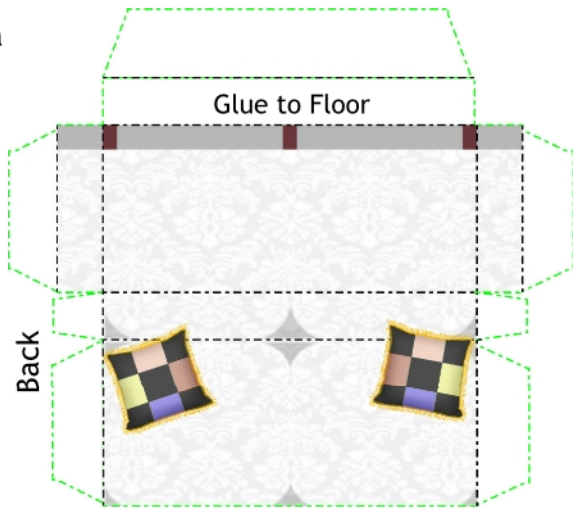




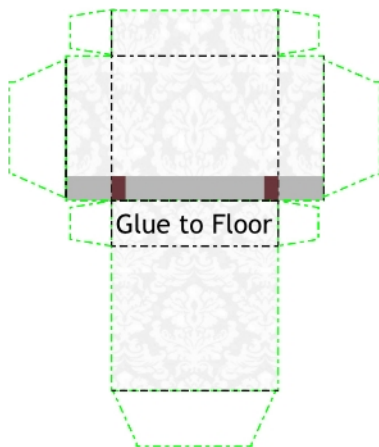
TV Stand



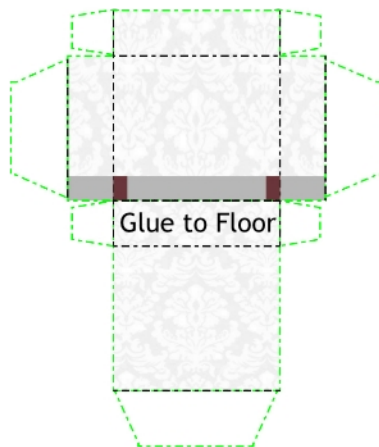
Sofa



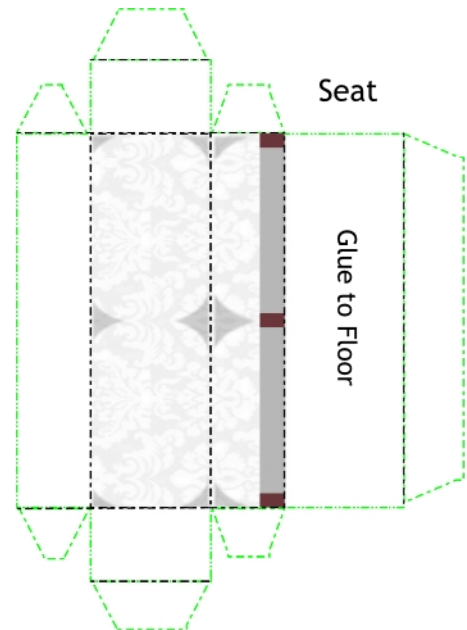
Arm



Arm

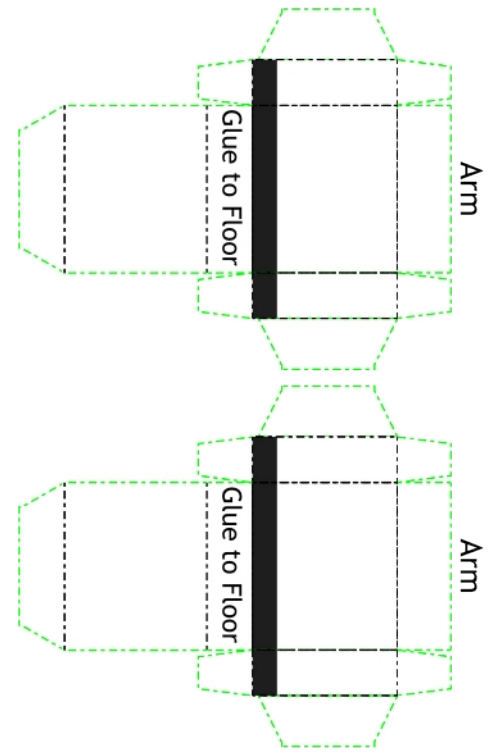
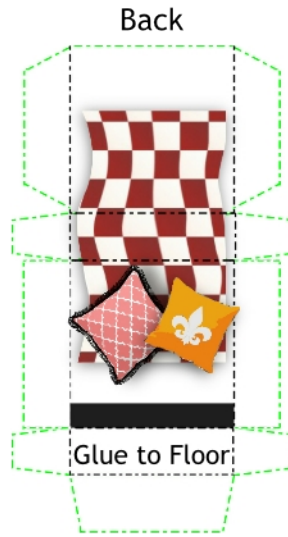
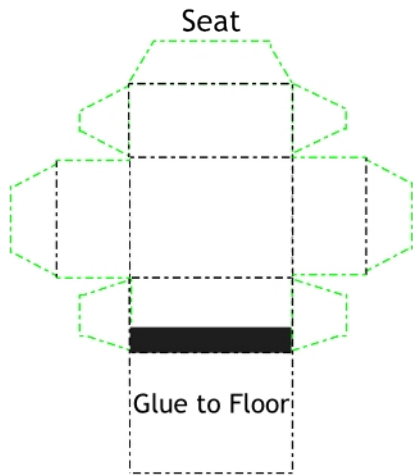


Seat





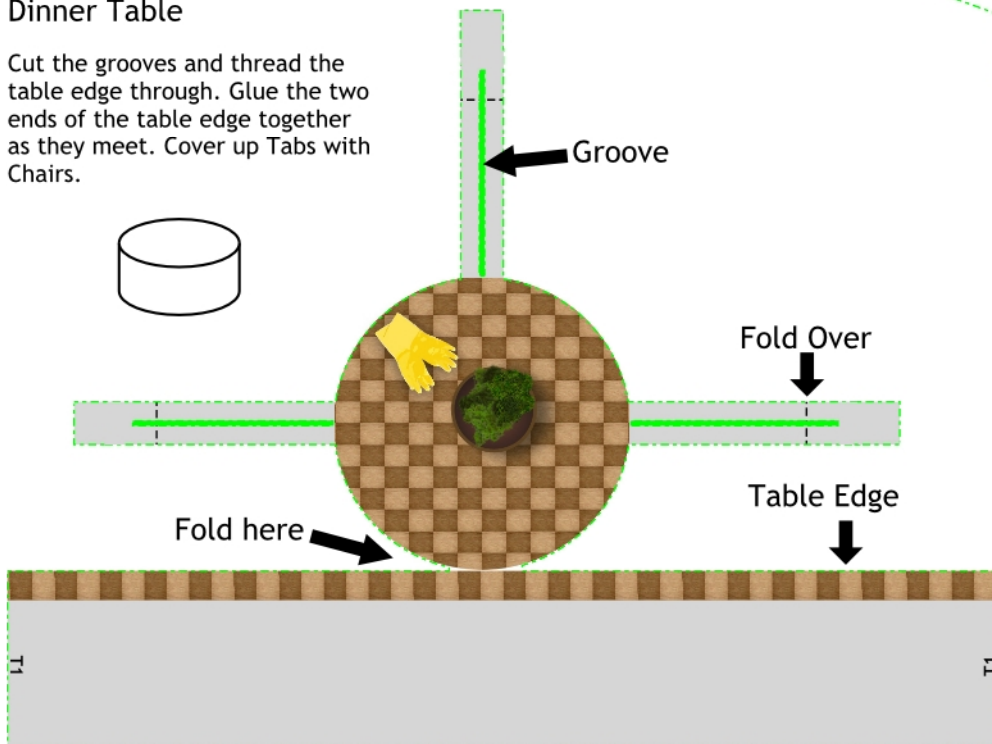
Arm Chair



Kitchen Furniture

Dinner Table

Cut the grooves and thread the table edge through. Glue the two ends of the table edge together as they meet. Cover up Tabs with Chairs.



Cabinet Over Fridge

